

Photos Courtesy of the San Diego Convention and Visitors Bureau



# AMERICAN SOCIETY FOR INVESTIGATIVE PATHOLOGY 2012 Annual Meeting at Experimental Biology April 21-25, 2012 - San Diego, CA (USA)



## GUEST SOCIETIES



American College of Veterinary Pathologists (ACVP)



American Society for Matrix Biology (ASMB)



International Society for Analytical and Molecular Morphology (ISAMM)



International Society for Biological and Environmental Repositories (ISBER)  
*A Division of ASIP*



Società Italiana di Patologia/Italian Pathology Society (SIP)

*An Affiliate Member of ASIP*



Society for Cardiovascular Pathology (SCVP)



## Mark Your Calendars!

We invite you to participate in the American Society for Investigative Pathology's **2012 Annual Meeting**, to be held at the **San Diego Convention Center and Marriott Marquis & Marina in San Diego, CA, from April 21-25, 2012 in conjunction with Experimental Biology 2012.**

The program committee has assembled a dynamic scientific program encompassing diverse topics related to basic and translational biology and pathobiology of human disease to be presented by ASIP and guest societies, including the **American College of Veterinary Pathologists (ACVP)**, the **American Society for Matrix Biology (ASMB)**, the **International Society for Analytical and Molecular Morphology (ISAMM)**, the **International Society for Biological and Environmental Repositories (ISBER)**, the **Society for Cardiovascular Pathology (SCVP)**, and the **Italian Pathology Society (SIP)**.

The 2012 scientific program will include ASIP member interests in pathobiology of diseases and will highlight exciting new emerging research topics. Presentation formats will encompass symposia and workshops in addition to educational and training sessions. Symposia by leading scientists will cover topics that include Resolution of Inflammation, Induced Pluripotent Stem Cells, Regulation of Epithelial Junctions in Development and Disease, Protein Folding Diseases and Chaperonopathies, and Biological Features of Myofibroblasts. Additional symposia will highlight Evolutionary Aspects of Animal Models, Metabolism and Cancer, Better Disease Biomarkers Through Biobanking, Pathogenesis and Molecular Diagnosis of Cardiomyopathies, Pulmonary Pathology/Pathobiology, Recent Advances in the Pathobiology of Diabetic Complications and Recent Advances in Diagnostic Neuropathology. Given the increased interest and importance of advanced imaging techniques, there will be a session on Non-invasive Optical Imaging/Phenomics.

Another exciting aspect of the 2012 meeting will include two thematic one-day sessions on the Molecular and Cellular Basis of Disease that specifically highlight the Microbiome and Disease and Liver Pathobiology. These sessions will incorporate seminars by expert invited speakers and abstract-driven presentations and posters. A highlight of this year's program includes the Presidential Symposium, entitled: *"Pathogen-Host Interactions: Provoking and Evading the Immune Response."* Additional special interest groups will present workshops and networking sessions focused on vascular biology (Blood Vessel Club), liver Pathobiology/hepatocellular cancer (Club Hepatomania), Personalized Medicine & Breast Cancer and Autophagy.

Several of the ASIP Meritorious Awardees have been

selected. The ASIP Rous-Whipple Award lecture on *"The Many Roles of VEGF in the Adult"* will be presented by **Patricia D'Amore**. The ASIP Outstanding Investigator Award lecture on *"Lost in Ubiquitination, Found by Mass Spectrometry: Identification of E3 Ligase Substrates Controlling Critical Cellular Events and Cancer"* will be presented by **Kojo S. J. Elenitoba-Johnson**, and the ASIP Excellence in Science Award on *"Mechanisms of TDP-43 Mediated Neurodegeneration in ALS and FTL"* will be presented by **Edward B. Lee**.

A fundamental component of the program will include abstract-driven mini-symposia and poster sessions. Given ASIP's strong commitment to supporting young investigators and trainee members, the program will also include special workshops on career development and presentation skills, and will offer opportunities for trainee members to share their research and receive awards, including the **ASIP Experimental Pathologist-in-Training Award (EPIT)**, **Experimental Pathologist-in-Graduate Training Award (EPIGT)**, **Trainee Travel Awards** and **Minority Trainee Travel Awards**. As members of the investigative pathology community, your participation in the ASIP Annual Meeting is not only vital to the Society's success but will help to grow the excellent scientific program that we have assembled. Please register, submit abstracts to ASIP topic categories and join us in staying abreast of leading scientific research pertaining to pathophysiology of disease. **We look forward to your participation in ASIP's scientific program at EB 2012.**

**Asma Nusrat, MD**  
**ASIP Program Chair**

## Deadlines

### November 8, 2011

- Abstract Submission Deadline\*

### November 15, 2011

- Deadline to submit ASIP & ICPI Trainee Award applications and supporting documents.

### February 23, 2012

- Deadline for Early (Reduced) Registration. *You may register online after this date, however your registration will be at the higher fee.*

### March 23, 2012

- Deadline for hotel reservations

\* **View the abstract submission instructions and list of ASIP topic categories at [www.asip.org/mtgs/eb12/abstracts.cfm](http://www.asip.org/mtgs/eb12/abstracts.cfm)**

## Registration Rates

EB Registration Fees	By Feb 23	After Feb 23
Sponsoring/Participating Society Members*	\$325	\$425
Nonmembers	\$475	\$575
Retired Society Members	\$120	\$135
** Graduate Student Members	\$75	\$85
** Graduate Student Nonmembers	\$95	\$105
*** Undergraduate Students, High School Students and Teachers		
On-site registration only - Free		

\* Members of ASIP and its guest societies (ACVP, ASMB, ISAMM, ISBER, SCVP, & SIP) are eligible to register at the "Sponsoring/Participating Society Member" rate.

\*\*Graduate Student Registration (including all Society student members): You must have a department head or research advisor certify your student eligibility. If registering online, enter the name and email address of your department head.

If registering at the meeting, bring your student ID card or a letter signed by your department head. "Student" will be indicated on your badge. Postdoctoral fellows, hospital residents, interns, and laboratory technicians do not qualify as students and must pay the full member or nonmember rate.

\*\*\*Undergraduate Students, High School Students and High School Teachers: Registration will not be accepted in advance. To receive complimentary registration on-site, bring a student or teacher ID card or a letter signed by your department head, research advisor, principal or teacher.

**Register online:**  
<http://experimentalbiology.org>

The registration fee includes entrance to scientific sessions, exhibits, and a copy of the *Program*. **The abstracts will be published online only as part of *The FASEB Journal*.** Additional fees for special Society satellite meeting and social activities **may** be required.

### New in 2012!

FASEB will **not** mail any badges or programs in advance of the meeting. All registrants will need to bring a copy of their email confirmation to the on-site registration area at the Convention Center to pick up their badge, program and briefcase.



**Looking for  
a new job?**

View the most comprehensive pathology jobs board available!

Listings include positions in the basic research, clinical, academic, biotech, pharmaceutical and non-profit arenas.

Post your resume online anonymously. Whether you're actively or passively seeking work, your online resume is your ticket to great job offers!

**PathologyJobsToday.org**



**Save the  
Date!**

**ASIP Annual Meeting and  
Centennial Celebration at  
Experimental Biology 2013**

**April 20-24, 2013  
Boston, MA**

## ASIP Award Application Information & Deadlines

The following awards require submission of an abstract to the 2012 Experimental Biology Meeting. For details on abstract submission, visit: <http://www.asip.org/mtgs/eb12/>  
Abstract Submission Deadline: November 8, 2011

### ■ ASIP Experimental Pathologist-in-Training (EPIT) Award and ASIP Experimental Pathologist-in-Graduate Training Award (EPIGT)

The EPIT is a prestigious award presented to an ASIP trainee member who is a postdoctoral fellow (including research and clinical fellows).

The EPIGT is a prestigious award presented to an ASIP trainee member who is a graduate student in a PhD training program, MD/PhD training program or MD training program.

These awards are presented to trainees who have excelled in investigative efforts in studying mechanisms of disease, as evidenced by an abstract submission to the ASIP annual meeting, an extended research report, and a letter of recommendation attesting to the candidate's role in the work and potential as a biomedical research investigator. The awards each include: a certificate of achievement for the winning abstract presented at the ASIP Annual Meeting Awards Presentation at the Experimental Biology Meeting, a \$1,500 honorarium and complimentary meeting registration.

Candidates for the EPIT and EPIGT Awards are also considered for ASIP Merit Awards (\$1,250 plus complimentary registration). Each applicant must be a trainee member of ASIP. Prior recipients of the EPIT, EPIGT, and Merit Awards may reapply if the work submitted is clearly distinct from the work previously submitted for their winning application (not just a continuation of the same project). In such cases, the applicants should submit a copy of the previous winning application along with the new application.

**Application Deadline: November 15, 2011**

**Apply online at: [www.asip.org/awds/epit.htm](http://www.asip.org/awds/epit.htm) (EPIT)**

**Apply online at: [www.asip.org/awds/epigt.htm](http://www.asip.org/awds/epigt.htm) (EPIGT)**

### ■ Trainee Travel Awards

To promote the entry of young scientists into the mainstream of the basic science community and to encourage the participation of young investigative pathologists in the Annual Meeting, the American Society for Investigative Pathology is offering a limited number of Trainee Travel Awards of \$500 each to offset travel expenses to the Experimental Biology Meeting. Some of these awards are funded by the A.D. Sobel-ASIP Education Fund. The ASIP Program Committee will select the recipients based on the scientific abstracts. Abstracts will be selected for presentation in either poster sessions or in minisymposia. These abstracts need not be submitted strictly to ASIP categories.

**Application Deadline: November 15, 2011**

**Apply online at: [www.asip.org/awds/trainee\\_eb.htm](http://www.asip.org/awds/trainee_eb.htm)**

### ■ Minority Trainee Travel Awards

The FASEB Minority Access to Research Careers (MARC) Program has awarded ASIP funding to promote the entry of

under-represented minority scientists and minority-serving institutions into the mainstream of the basic science community and to encourage the participation of young investigative pathologists in the Annual Meeting. Successful applicants will be reimbursed up to \$1,650 in travel costs associated with conference attendance and participation. These funds are meant to defray expenses for lodging, air, ground transportation, and meeting registration.

The ASIP Program Committee will select the recipients based on the scientific abstracts. Abstracts will be selected for presentation in either poster sessions or in minisymposia (oral sessions). These abstracts need not be submitted strictly to ASIP categories. Awardees will be recognized and presented with this award during the ASIP Awards Presentation and Reception at the meeting.

*The ASIP Minority Trainee Travel Awards are funded by a grant from the National Institute of General Medical Sciences, National Institutes of Health [FASEB MARC Program: T36-GM08059-28].*

**Application Deadline: November 15, 2011**

**Apply online at: [www.asip.org/awds/min\\_eb.htm](http://www.asip.org/awds/min_eb.htm)**

### ■ ICPI Trainee Travel Awards

ASIP Trainees who submit an abstract are eligible to apply to the Intersociety Council for Pathology Information (ICPI) for \$750 travel awards to attend the ASIP Annual Meeting at EB 2012. Applications are available online at [www.pathologytraining.org](http://www.pathologytraining.org).

**Application Deadline: November 15, 2011**

## Continuing Medical Education (CME)

This activity ("ASIP 2012 Annual Meeting at Experimental Biology 2012") has been planned and implemented in accordance with the Essential Areas and policies of the Accreditation Council for Continuing Medical Education (ACCME) through the joint sponsorship of the Federation of American Societies for Experimental Biology (FASEB) and the American Society for Investigative Pathology (ASIP). FASEB is accredited by the ACCME to provide continuing medical education for physicians.

The Federation designates this "live" educational activity for a maximum of 48 *AMA PRA Category 1 Credit(s)*<sup>™</sup>. Physicians should only claim credit commensurate with the extent of their participation in the activity.

CME application forms will be available online beginning April 21, 2012 on the ASIP website ([www.asip.org](http://www.asip.org)). There is a \$50 CME application fee, payable upon submission of the online CME application.

### Meeting Objective/Target Audience

The objective of the ASIP 2012 Annual Meeting at Experimental Biology 2012 is to increase basic and applied pathology knowledge and to provide a forum for the exchange of new research by scientists and investigators. The meeting is designed to support participants' educational needs in the physician competency area of Medical Knowledge, as defined by the Accreditation Council for Graduate Medical Education (ACGME) and the American Board of Medical Specialties (ABMS).

At the completion of this meeting, participants should be able to:

1. discuss the research underway and/or the current topics relevant to their areas of interest in pathology;
2. demonstrate a gained level of knowledge of the methods and techniques being used by researchers and practitioners in this field; and
3. utilize information and data that lead to improvements in human health.

This meeting is targeted to graduate students, postdoctoral fellows, research scientists, clinical practitioners, and medical education professionals.

#### **Disclosure Policy**

The Federation requires that audiences at FASEB-sponsored educational programs be informed of the organizers' and presenters' (speaker, faculty, author, or contributor) academic and professional affiliations, and the existence of any relevant financial relationship a presenter has with any proprietary entity producing health care goods or services consumed by, or used on patients, with the exemption of non-profit or government organizations and non-health care related companies. The intent of this disclosure is not to prevent a speaker from making a presentation. This policy allows the listener/attendee to be fully knowledgeable in evaluating the information being presented.

Disclosure includes any relationship that may bias one's presentation or which, if known, could give the perception of bias. These situations may include, but are not limited to: 1) stock options or bond holdings in a for-profit corporation or self-directed pension plan; 2) research grants; 3) employment (full or part-time); 4) ownership or partnership; 5) consulting fees or other remuneration; 6) non-remunerative positions of influence such as officer, board member, trustee, or public spokesperson; 7) receipt of royalties; 8) speaker's bureau; 9) other. For full-time employees of industry or government, the affiliation listed in the Program will constitute full disclosure.

## **Sponsors**

ASIP wishes to express our appreciation to the following companies and organizations for their generous support. The ASIP 2012 Annual Meeting is supported by unrestricted educational grants from:

### **The A. D. Sobel - ASIP Education Fund**



### **The Robert E. Stowell Endowment Fund**



## Saturday, April 21, 2012



### Breast Cancer Workshop: Personalized Medicine & Breast Cancer

8:30 AM - 11:30 AM

Chairs: Ashley G. Rivenbark and William B. Coleman

Sponsored by the ASIP Breast Cancer Scientific Interest Group

- Utility of Molecular Profiling in Guiding Targeted Breast Cancer Treatment  
Gabriel N. Hortobagyi, University of Texas MD Anderson Cancer Center
- Molecular Biomarkers for Early Detection of Breast Cancer  
Thea Tlsty, University of California, San Francisco
- Identification of New Pathways for Targeted Breast Cancer Therapy  
William B. Coleman, University of North Carolina School of Medicine
- Prediction of Patient Responses to Breast Cancer Therapies  
W. Fraser Symmans, University of Texas MD Anderson Cancer Center

### Mesenchymal Stem Cells and Lung Disease

8:30 AM - 11:30 AM

Chairs: Michael A. Matthay and Co-Chair: Dani Zander

- Mesenchymal Stem Cells and Acute Lung Injury  
Michael A. Matthay, University of California San Francisco
- TBD  
Tracey L. Bonfield, Case Western Reserve University
- TBD  
Jahar Bhattacharya, Columbia University Medical Center
- Mesenchymal Stem Cells and Mechanisms of Interstitial Lung Fibrosis: Potential for Interaction with the Environment  
Arnold R. Brody, North Carolina State University

### Pathobiology for Basic Scientists: Cell Injury and Inflammation: New Riffs on a Classical Score

8:30 AM - 11:30 AM

Chairs: Richard Mitchell and Martha Furie

Sponsored by the ASIP Education Committee

- Autophagy  
Charleen Chu, University of Pittsburgh Medical School
- Apoptosis  
Scott Oakes, University of California, San Francisco
- Inflammasome  
Ken Rock, University of Massachusetts Medical School

### 12th Annual Workshop on Graduate Education in Pathology: Genomics and Personalized Medicine in the Graduate Curriculum

11:30 AM - 12:30 PM

Chair: Richard Mitchell

Sponsored by the ASIP Education Committee

- Overview: Genomic and Personalized Medicine  
Dennis Wall, Beth Israel-Deaconess Medical Center
- Genomic Medicine in Pathology Residency Programs  
Jeff Saffitz, Beth Israel-Deaconess Medical Center
- Genomic Medicine in Pathology Graduate Programs  
Andrew Beck, Stanford University School of Medicine

### ASMB LECTURE: Fibronectin Matrix Assembly in Development and Disease

11:30 AM - 12:30 PM

Speaker: Jean Schwarzbauer

Sponsored by ASIP and the American Society for Matrix Biology



### Breast Cancer Scientific Interest Group Networking and Poster Session

11:45 PM - 1:45 PM

Chair: Ashley G. Rivenbark

Sponsored by the ASIP Breast Cancer Scientific Interest Group

This informal networking session will follow the Breast Cancer Workshop and will showcase a number of posters that will be selected for discussion. This event is provided for all EB attendees who are interested in breast cancer research. One of the major objectives of this session is to create a community of breast cancer researchers and to foster collaborations. Additionally, this professional networking outlet will provide new investigators and/or predoctoral students and postdoctoral trainees an opportunity to become acquainted with scientists working in the field. A complimentary light lunch will be provided for all in attendance.



### Highlights: Graduate Student Research in Pathology

1:30 PM - 4:00 PM

Chair: Diane Bielenberg

Co-Chair: Keli Kolegraff

Sponsored by the ASIP Committee for Career Development, Women and Minorities

### iPS CELLS: Are We There Yet!

2:00 PM - 5:00 PM

Chair: S. Paul Monga

- Probing the Potential of Human Pluripotent Stem Cell Progeny  
William E. Lowry, University of California, Los Angeles
- Using Induced Pluripotent Stem Cells to Study Autism  
Ricardo Dolmetsch, Stanford University School of Medicine
- Using Human Pluripotent Stem Cells To Study Metabolic Liver Disease  
Stephen Duncan, Medical College of Wisconsin
- DNA Methylation Dynamics in Pluripotent Cells  
Joseph R. Ecker, The Salk Institute
- Instructing Cells to Change their Identity  
John Gearhart, University of Pennsylvania

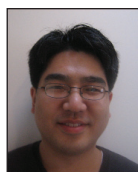


### The Myofibroblast: Biological Features and Therapeutic Perspective

2:00 PM - 5:00 PM

Chair: Cory M. Hogaboam

- TBD  
Cory M. Hogaboam, University of Michigan
- TBD  
Sem Phan, University of Michigan
- The Specialized Myofibroblasts of the Liver: Different Roles, Different Cues  
Rebecca Wells, University of Pennsylvania
- TBD  
Boris Hinz, University of Toronto



#### ASIP EXCELLENCE IN SCIENCE AWARD LECTURE:

##### Mechanisms of TDP-43 Mediated Neurodegeneration in ALS and FTL

3:35 PM - 3:50 PM (Presented during the Highlights: Graduate Student Research in Pathology session)

Award Recipient: Edward B. Lee, Hospital of the University of Pennsylvania

Supported by an unrestricted educational grant from the A.D. Sobel - ASIP Education Fund



#### ASIP OUTSTANDING INVESTIGATOR AWARD LECTURE:

##### Lost in Ubiquitination, Found by Mass Spectrometry: Identification of E3 Ligase Substrates Controlling Critical Cellular Events and Cancer

5:00 PM - 6:00 PM

Award Recipient: Kojo S.J. Elenitoba-Johnson, University of Michigan

View the ASIP 2011 Annual Meeting  
slide show online at:  
[www.asip.org/mtgs/eb.htm](http://www.asip.org/mtgs/eb.htm)



## Sunday, April 22, 2012

### Career Development Workshop and Breakfast: Getting Your Dream Job: Preparing Your CV/Resume and Managing Your Interview

7:00 AM - 9:00 AM

**Limited space available. Register in advance to guarantee your space!**

**Registration Form on page 15. Registration deadline: March 26, 2012**

Chairs: Tara Sander and Roberto Barrios

Sponsored by the ASIP Committee for Career Development, Women and Minorities and the FASEB Minority Access to Research Careers (MARC) Office

- Welcome Breakfast and Opening Remarks  
Roberto Barrios, Methodist Hospital System
- How to Prepare a Curriculum Vitae for Academia  
Tara Sander, Children's Hospital of Wisconsin
- How to Write a Resume for Industry  
Elizabeth Galbreath, Lilly Corporate Center
- Managing your Interview: Part I: The Academic Job Interview  
Mock interviews: Linda McManus, Mark E. Sobel, and Cecelia Yates
- Managing your Interview: Part II: The Industry Job Interview  
Mock Interviews: Elizabeth Galbreath, Tara Sander, and Roberto Barrios



### Molecular and Cellular Basis of Disease: Liver Pathology Session 1: Liver Development, Stem Cells and Regeneration

8:30 AM - 11:30 AM

Chair: Satdarshan P. S. Monga

Sponsored by the ASIP Liver Pathology Scientific Interest Group

- The Biology of the Fox1 Progenitor Cell Lineage in Liver Injury and Repair  
Linda Greenbaum, Thomas Jefferson University
  - Role of Developmental Morphogens in Adult Liver Regeneration  
Anna Mae Diehl, Duke University Medical Center
  - MicroRNAs as Drivers of Liver Regeneration  
Holger Willenbring, University of California - San Francisco
  - Initiation and Termination Pathways of Liver Regeneration  
George Michalopoulos, University of Pittsburgh
  - Neuroendocrine Regulation of Biliary Proliferation  
Gianfranco Alpini, Texas A&M Health Science Center
- In addition to invited speakers, talks will be included from abstract submissions*

### Computational Phenomics: The Potential of Whole Animal Image Analysis in Elucidating Gene Function and Chemical Toxicity

8:30 AM - 11:30 AM

Chairs: Keith C. Cheng and Anant Madabhushi

- The Potential Role of High-Throughput Synchrotron MicroCT Imaging of Zebrafish in Computational Phenomics  
Keith C. Cheng, Penn State Hershey Medical Center
- Tol2 Transposon-based Gene Trap Mutagenesis and High-throughput Capillary-based Imaging for the Zebrafish Phenome Project  
Stephen Ekker, Mayo Clinic
- Fish and Chips: High-Throughput Cellular-Resolution Phenotyping of Zebrafish  
Mehmet Fatih Yanik, Massachusetts Institute of Technology
- Discussion and Break
- Roles of Multimodal Registration and Correlative Analysis in Phenomics  
Anant Madabhushi, Rutgers University
- The Importance and Potential of Computational Phenomics in Ecotoxicology  
David Hinton, Duke University
- Discussion

## Regulation of Epithelial Junctions in Development and Diseases

8:30 AM - 11:30 AM

Chairs: Andrei Ivanov and Asma Nusrat

- Unraveling Relationships Between Intercellular Junction Proteins and Epithelial Homeostasis  
Asma Nusrat, Emory University
- Catenins of the p120-subfamily at Junctions and in the Nucleus  
Pierre McCrea, University of Texas MD Anderson Cancer Center
- Regulation and Signaling of the Cadherin/Catenin Adhesion System  
Cara Gottardi, Feinberg School of Medicine, Northwestern University
- Regulation of Blood-testis Barrier: An Unexpected Turn of Events  
C. Yan Cheng, Population Council

## 12th Annual Career Development Program and Lunch:

### Fundamental Basics for Success: How to Write Award-Winning Grant Proposals

11:45 AM - 1:45 PM

Limited space available. Register in advance to guarantee your space!

Registration Form on page 15. Registration deadline: March 26, 2012

Chairs: Titus A. Reaves and Jayne Reuben

Sponsored by the ASIP Committee for Career Development, Women and Minorities, the American Association of Anatomists and the FASEB Minority Access to Research Careers (MARC) Office

- Developing Ideas into Fundable Research Grant Proposals  
Monte Willis, University of North Carolina
- Funding Mechanisms at NIH and Other Agencies  
Kathy Svoboda, Texas A&M Health Science Center
- Award Winning Grants  
Charles Parkos, Emory University Hospital



## Blood Vessel Club: Vascular Development

2:00 PM - 5:00 PM

Chair: David S. Milstone



## Molecular and Cellular Basis of Disease: Liver Pathology Session 2: Liver Injury, Fibrosis and Hepatocellular Cancer

2:00 PM - 5:00 PM

Chair: Satdarshan P. S. Monga

Sponsored by the ASIP Liver Pathobiology Scientific Interest Group

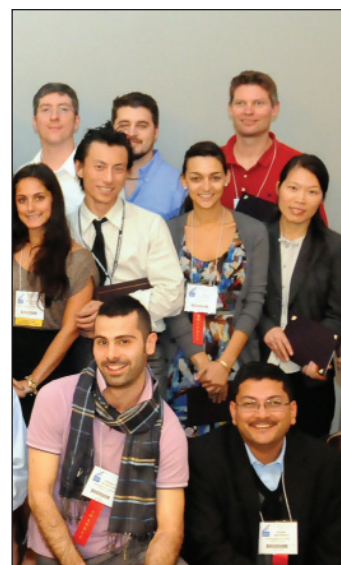
- Origin and Source of Myofibroblasts in Hepatic Fibrosis  
David Brenner, University of California, San Diego
  - FXR and Bile Acids: Roles in Liver Regeneration and Pathogenesis of Hepatocellular Carcinoma  
Udayan Apte, University of Kansas Medical Center
  - Role of S-Adenosylmethionine in the Pathogenesis, Treatment and Prevention of Hepatocellular Carcinoma  
Shelly Lu, Keck School of Medicine of USC
  - Novel Mechanisms of Liver Tumorigenesis: Biological and Therapeutic Implications  
Satdarshan P. S. Monga, University of Pittsburgh
  - Identification of Shp2 as a Tumor Suppressor in Hepatocarcinoma  
Gen-Sheng Feng, University of California, San Diego
- In addition to invited speakers, talks will be included from abstract submissions*

## Resolution of Inflammation

2:00 PM - 5:00 PM

Chairs: Sean P. Colgan and Andrew S. Neish

- TBD  
Charles Serhan, Brigham and Women's Hospital
- Responses to Apoptotic Cells in Resolution of Inflammation  
Peter Henson, National Jewish Medical and Research Center
- Defective Inflammation Resolution in Atherosclerosis  
Ira Tabas, Columbia University



View the ASIP 2011 Annual Meeting  
slide show online at:  
[www.asip.org/mtgs/eb.htm](http://www.asip.org/mtgs/eb.htm)



**ASIP Rouse-Whipple Award Lecture: The Many Roles of VEGF in the Adult**  
**5:00 PM - 6:00 PM**

Award Recipient: Patricia D'Amore, Schepens Eye Research Institute/ Harvard Medical School



**Club Hepatomania**  
**5:30 PM - 7:30 PM**

Chair: S. Paul Monga, University of Pittsburgh

Sponsored by the ASIP Liver Pathobiology Scientific Interest Group

This informal social event is geared towards all ASIP members with an interest in Liver Biology. The program will include a select number of posters that will be chosen for discussion. More importantly, this will be a social networking session and a great opportunity to make new friends or talk to old ones. Another purpose of this session is to bring all the folks who share a passion for liver research under the same roof for additional discussions and an incentive to our new collaborations. Complimentary refreshments will be available to all in attendance. We will also highlight the liver-specific programs of our next ASIP meeting at EB 2013 in Boston, MA.



**Die Schaden Klub (Cell Injury Scientific Interest Group Networking Event)**  
**5:30 PM - 7:30 PM**

Chairs: Cecelia C. Yates and Monte S. Willis

Sponsored by the ASIP Cell Injury Scientific Interest Group this informal social event aims to build a community and foster collaborations for ASIP

members with an interest in cellular responses to Cell Injury. The program will include a select number of posters that will be chosen for discussion. More importantly, this will be a social networking session and a great opportunity to connect or reconnect with ASIP members. This session will bring together colleagues who share an interest in cell injury roof for additional discussions and an incentive to create new collaborations. Complimentary refreshments will be available to all in attendance. We will also highlight the cell injury-specific programs of our next ASIP meeting at EB 2013 in Boston, MA.

## Monday, April 23, 2012

**ASIP COTRAN EARLY CAREER INVESTIGATOR AWARD LECTURE: TBD**

**8:30 AM - 9:15 AM**

Award Recipient: TBD

**ACVP Symposium: Evolutionary Aspects of Animal Models**

**9:30 AM - 12:30 PM**

Chairs: Elizabeth Uhl and Mike Oglesbee

Sponsored by ASIP Veterinary Pathology Scientific Interest Group and the American College of Veterinary Pathologists

- Animals as Models of Human Cardiovascular Disease: or the Search to Overcome Outdated Evolutionary Homeostatic Mechanisms  
Robert Hamlin, The Ohio State University
- Of Mice and Men: Evolutionarily, What are the Best Rodent Models of the Human Immune System for Infectious Disease Research?  
Stefan Niewiesk, The Ohio State University
- Evolutionary Aspects of Animal Models of Aging  
Steven N. Austad, University of Texas Health Science Center
- Modeling Disease Phenotypes: How an Evolutionary Perspective Enhances the Questions  
Elizabeth Uhl, University of Georgia



### ISBER Symposium: Better Disease Biomarkers Through Biobanking

9:30 AM - 12:30 PM

Chairs: Michael Hogan and Galen Hostetter

Sponsored by ASIP and International Society for Biological Environmental Repositories (ISBER)

- TBD  
Janelle Noble, Children's Hospital Oakland Research Institute
- TBD  
Brian Haab, Van Andel Institute
- TBD  
Galen Hostetter, Van Andel Institute
- Advanced Technology for Ambient Temperature Sample Preservation  
Mike Hogan, GenVault Corporation

### Stowell Symposium: Trends in Experimental Pathology: Metabolism & Cancer

9:30 AM - 12:30 PM

Chairs: Sebastiano Andò and Alberto Mantovani

Sponsored by ASIP and Società Italiana di Patologia/Italian Pathology Society (SIP)

Supported by an unrestricted educational grant from the Robert E. Stowell Endowment Fund

- A Mitochondrial Pathophysiology of Metabolic and Degenerative Diseases, Cancer and Aging  
Douglas Wallace, The Children's Hospital of Pennsylvania
- Macrophages, Metabolism and Cancer  
Alberto Mantovani, University of Milan
- Adipokines in Breast Cancer  
Stefania Catalano, University of Calabria
- Hypoxia and Tumor Metabolism  
Navdeep Chandel, Northwestern University



### Veterinary Pathology Scientific Interest Group Lunch/Networking Event

12:30 PM - 1:45 PM

Chairs: Elizabeth Galbreath & Elizabeth Whitley

Sponsored by the ASIP Veterinary Pathology Scientific Interest Group

Members of the American Society of Investigative Pathology, the American College of Veterinary Pathologists and their graduate students or residents with an interest in Veterinary Pathologists are invited to join members of the ASIP ACVP Symposium Committee in an informal luncheon and networking setting for networking with other ASIP and ACVP members, graduate students and residents with an interest in animal models of disease, veterinary and/or toxicologic pathology. Attendees who have submitted abstracts/posters, particularly research submitted in the ASIP Veterinary Pathology or Toxicologic Pathology subcategories, are invited to bring their work to post and share during the session. A complimentary light lunch will be provided for all in attendance.

### Lunch & Learn: Best Practices of Biobanking and Specimen Collection

12:45 PM - 1:45 PM

Chairs: Wendy Mars, Meera Hameed and Tara Sander

Sponsored by the ASIP Education Committee

### Presidential Symposium

#### Pathogen-Host Interactions: Provoking and Evading the Immune Response

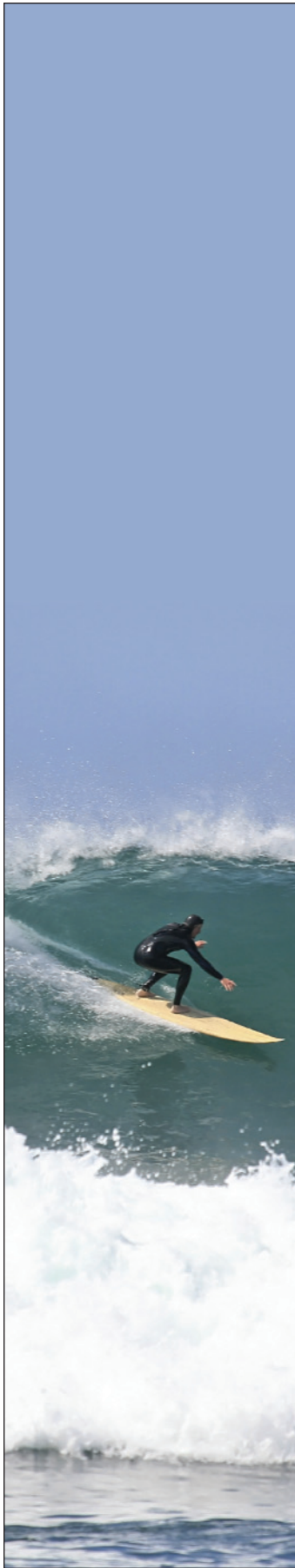
2:00 PM - 5:00 PM

Chair: Martha B. Furie

- Introduction  
Martha B. Furie, Stony Brook University
- Autophagy as a Component of the Innate Immune Response  
Michele S. Swanson, University of Michigan Medical School
- Lyme Disease and Tularemia: The Yin and Yang of Inflammation  
Martha B. Furie, Stony Brook University
- Inflammatory Responses in Virus-induced Respiratory Disease  
Nicholas W. Lukacs, University of Michigan Medical School
- AIDS Pathogenesis and the Mucosal Immune System  
Andrew A. Lackner, Tulane National Primate Research Center



View the ASIP 2011 Annual Meeting  
slide show online at:  
[www.asip.org/mtgs/eb.htm](http://www.asip.org/mtgs/eb.htm)



**ASIP Awards Presentation and Membership Business Meeting [NOT CME]**

**5:00 PM - 6:00 PM**

Chair: Martha B. Furie

**ASIP Awards Reception [NOT CME]**

**6:00 PM - 8:00 PM**

**Tuesday, April 24, 2012**

**Molecular and Cellular Basis of Disease: Host-Microbe Interactions**

**Session 1: The Microbiota and Systemic Disease**

**8:30 AM - 11:30 AM**

Chairs: Andrew S. Neish and Susan Lynch

- Role of the Microbiota in Inflammatory Bowel Disease  
Wendy S. Garret, Harvard School of Public Health
- Microbiota and Metabolic Syndrome in Mice Lacking Toll-like Receptor 5  
Ruth Ley, Cornell University
- Microbiota in Systemic Autoimmunity  
Alexander Chervonsky, The University of Chicago
- *Three short talks will be selected from abstracts submitted to the 4043 to 4061 ASIP sections*

**SCVP Symposium: The Pathogenesis and Molecular Diagnosis of Cardiomyopathies**

**8:30 AM - 11:30 AM**

Chairs: Jon Seidman and L. Maximilian Buja

Sponsored by ASIP and the Society for Cardiovascular Pathology

- Genetic Etiology and Diagnosis of Hypertrophic Cardiomyopathy  
Jonathan Seidman, Harvard Medical School
- Pathogenesis and Molecular Diagnosis of Dilated Cardiomyopathy  
Luisa Mestroni, University of Colorado School of Medicine
- Molecular Genetics and Pathogenesis of Arrhythmogenic Right Ventricular Cardiomyopathy  
Ali J. Marian, University of Texas Health Science Center and Texas Heart Institute
- Genetic and Epigenetic Risks as Modifiers for Common Heart Failure  
Gerald Dorn, University of Washington in St. Louis School of Medicine

**Mechanisms and Biological Roles of Autophagy**

**8:30 AM - 11:30 AM**

Chairs: Andrei Ivanov and Monte S. Willis

- Autophagic Regulation of Mitochondria Turnover in Oxidative Stress  
Xiao-Ming Yin, Indiana University
- Ras, Autophagy, and Glycolysis  
Jayanta (Jay) Debnath, University of California - San Francisco
- *In addition to invited speakers, talks will be included from abstract submissions*

**Scientific Sleuthing of Human Disease for High School Teachers**

**9:30 AM - 12:30 PM**

Chairs: Martha B. Furie and Kari Nejak-Bowen

**Molecular and Cellular Basis of Disease: Host-Microbe Interactions**

**Session 2: New Concepts in Vascular Biology: Endothelial Bacterial Interactions**

**2:00 PM - 5:00 PM**

Chairs: Michael Hickey and Francis W. Luscinskas

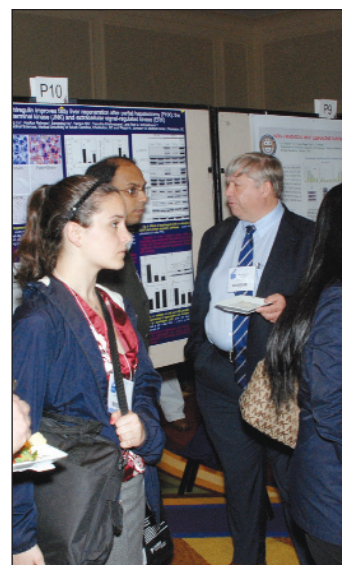
- Imaging the Inflammatory Response - Examination of Bacterial Interactions in the Vasculature  
Mike Hickey, Monash Medical Centre, Australia
- New Technologies Applied to the Study of Bacterial Pathogenesis  
Debra Hung, Harvard Medical School and Broad Institute
- Penetration of the Blood-Brain Barrier by Bacterial Pathogens  
Kelly Doran, San Diego State University
- *Three short talks will be selected from abstracts submitted to the 4043 to 4061 ASIP sections*

## Protein Misfolding and Chaperonopathies

2:00 PM - 5:00 PM

Chairs: Monte S. Willis and Jonathan Lin

- Endoplasmic Reticulum Stress & Cell Survival  
Jonathan H. Lin, University of California, San Diego
- The Role of ER-Associated Degradation (ERAD) in Channelopathies Due to Protein Misfolding  
Tingwei Mu, Case Western Reserve University School of Medicine
- Chaperones as the Underlying Pathophysiology of Disease  
Alberto Macario, University of Maryland Biotechnology Institute
- Transcriptional and Post-Transcriptional Regulation of Proangiogenic Factors by the Unfolded Protein Response  
Linda Hendershot, St. Jude Children's Research Hospital
- Progressive Aggregation Despite Chaperone Associations of a Mutant SOD1-YFP in Transgenic Mice that Develop ALS  
Mel B. Feany, Brigham and Women's Hospital
- To Eat or Not to Eat: Neuronal Metabolism, Mitophagy, and Parkinson's Disease  
Charleen Chu, University of Pittsburgh



## Wednesday, April 25, 2012

### Innate Immunity in the Brain

8:30 AM - 11:30 AM

Chair: Clayton A. Wiley

Sponsored by the ASIP Neuropathology Scientific Interest Group

- Introduction  
Clayton A. Wiley, University of Pittsburgh
- Microglia *in vivo*  
Axel Nimmerjahn, Salk Institute
- Monocyte Trafficking to Brain  
Richard Ransohoff, Cleveland Clinic
- Microglia *in vitro*  
Julia Kofler, University of Pittsburgh
- microRNA Modulation of Microglia  
Howard Weiner, Brigham & Women's Hospital



### Recent Advances in the Pathobiology of Diabetic Complications

8:30 AM - 11:30 AM

Chairs: Sridevi Devaraj and Ishwarlal Jialal

- The Role of Inflammation and Diabetic Vascular Complications  
Ishwarlal Jialal, UC Davis Medical Center
- Oxidative Stress in Diabetic Complications  
Sridevi Devaraj, UC Davis Medical Center
- Epigenetics, MicroRNAs and Diabetic Complications  
Rama Natarajan, Beckman Research Institute of City of Hope
- AGE-RAGE Axis in Diabetic Complications  
Ann Marie Schmidt, New York University School of Medicine



View the ASIP 2011 Annual Meeting  
slide show online at:  
[www.asip.org/mtgs/eb.htm](http://www.asip.org/mtgs/eb.htm)

# American Society for Investigative Pathology

Investigating the Pathogenesis of Disease

## MEMBERSHIP APPLICATION

### MEMBER BENEFITS

- **Scientific Meetings & Courses** - With reduced registration fees for ASIP members



- **The American Journal of Pathology (AJP)**

Published monthly in print and online. Members receive online access with an option to add a print subscription at a

substantially reduced rate. (AJP) ISI's Impact Factor: 5.224. ASIP Regular member corresponding authors receive a FREE COLOR FIGURE when publishing in *AJP*, a \$550 value!



- **The Journal of Molecular Diagnostics (JMD)**

Published six times/year in print and online. Members receive online access with an option to add a print

subscription at a substantially reduced rate. ISI's Impact Factor: 4.219. ASIP Regular member corresponding authors receive a FREE COLOR FIGURE when publishing in *JMD*, a \$550 value!

- **Peer Network**
- **Awards and Honors**
- **ASIP Journal CME Programs** - With reduced registration fees
- **ASIP Website: [www.asip.org](http://www.asip.org)**
- **Career Opportunities & Job Listings at [www.PathologyJobsToday.org](http://www.PathologyJobsToday.org)**
- The society newsletter, **ASIP Pathways**, features government affairs reports on current issues effecting biomedical researchers, as well as news from Committees, ASIP's Division and members, and other articles of interest
- **FASEB Directory of Members** ASIP Member names and contact information included in the online FASEB Directory of Members, including over 100,000 members of the 24 FASEB member-societies
- Reduced subscription rates and prices for **The FASEB Journal, Annual Reviews**, and select **Elsevier** publications

### PERSONAL PROFILE

Please print or type:

Candidate Name \_\_\_\_\_

Position \_\_\_\_\_

Institution \_\_\_\_\_

Department \_\_\_\_\_

Address \_\_\_\_\_

Address \_\_\_\_\_

City, State, Zip or Postal Code \_\_\_\_\_

Country \_\_\_\_\_

Telephone \_\_\_\_\_

Fax \_\_\_\_\_

Email \_\_\_\_\_

Birthdate \_\_\_\_\_

**Degrees:**

- MD  PhD  
 DVM  Other \_\_\_\_\_

**Gender (Optional Information):**

- Male  Female

### Scientific Interest Groups

Please check all that apply.

- Analytical and Molecular Morphology
- Biophysical Pathology
- Breast Cancer
- Cell Injury
- Gene Expression
- Inflammation/Immunopathology
- Informatics
- Liver Pathobiology
- Molecular Markers of Disease
- Mucosal Pathobiology
- Neoplasia/Growth Regulation
- Neuropathology
- Pulmonary Pathobiology
- Liver Pathobiology
- Tissue Banking
- Vascular Pathobiology
- Veterinary Pathology

### 2011 ANNUAL DUES

**Regular Membership**

- \$182 (Includes Online *AJP* & *JMD*)

**Associate Membership**

- \$85 (Includes Online *AJP* & *JMD*)

**Emeritus Membership**

- \$25 (Includes Online *AJP* & *JMD*)

**Post-doctoral Trainee Membership**

- \$50 (Includes Online *AJP* & *JMD*)

**Pre-doctoral Trainee Membership**

- \$50 (Includes Online *AJP* & *JMD*)

**Undergraduate Trainee Membership**

- \$25 (Includes Online *AJP* & *JMD*)

### Upgrade Journal Subscriptions (2011) to Include Print

**American Journal of Pathology (AJP)**

- \$50 - Print Upgrade (USA)  
 \$125 - Print Upgrade (Intl)

**Journal for Molecular Diagnostics (JMD)**

- \$25 - Print Upgrade (USA & Intl)

### Curriculum Vitae (CV)

- I will mail, fax, or email my CV to the ASIP Office. at the address below. I understand that my application for membership will NOT processed without my CV.

### Payment

- Check - Make payable to ASIP  
 VISA  MasterCard  American Express

Card # \_\_\_\_\_

Exp Date \_\_\_\_\_

Name on Card (Please print) \_\_\_\_\_

Signature \_\_\_\_\_

**Trainee and Special Applicants:**

**Please have your supervisor or head of educational unit complete the following:**

I verify that this applicant is a student, fellow, or resident in my training program.

Name (Please print) \_\_\_\_\_

Signature \_\_\_\_\_



American Society for Investigative Pathology

9650 Rockville Pike, Bethesda, MD 20814-3993 (USA)

Phone: (301) 634-7130, Fax: (301)-634-7990, Email: [asip@asip.org](mailto:asip@asip.org)

Your membership benefits will commence as soon as your application is approved.

Register for these special events!



**Career Development Workshop and Breakfast**  
**Getting Your Dream Job: Preparing Your CV/Resume and Managing Your Interview**

**Sunday, April 22, 2012 - 7:00am - 9:00am**  
**San Diego Marriott Marquis & Marina, San Diego, CA**

*Chairs: Tara L. Sander, PhD, Children's Hosp. of Wisconsin and Roberto Barrios, MD, Methodist Hosp. System*  
 Sponsored by the ASIP Committee for Career Development, Women & Minorities and the FASEB Minority Access to Research Careers (MARC) Program

- **Welcome Breakfast and Opening Remarks**  
*Roberto Barrios, MD, Methodist Hosp. System*
- **How to Prepare a Curriculum Vitae for Academia**  
*Tara L. Sander, PhD, Children's Hosp. of Wisconsin*
- **How to Write a Resume for Industry**  
*Elizabeth Galbreath, PhD, DVM, Lilly Corporate Center*
- **Managing your Interview, Part I: The Academic Job Interview**  
*Mock interviews: Linda M. McManus, PhD, Univ. of Texas Health Science Center, Mark E. Sobel, MD, PhD, ASIP, and Cecelia C. Yates, PhD, Univ of Pittsburgh School of Med.*
- **Managing your Interview, Part II: The Industry Job Interview**  
*Mock Interviews: Elizabeth Galbreath, Tara Sander, and Roberto Barrios*

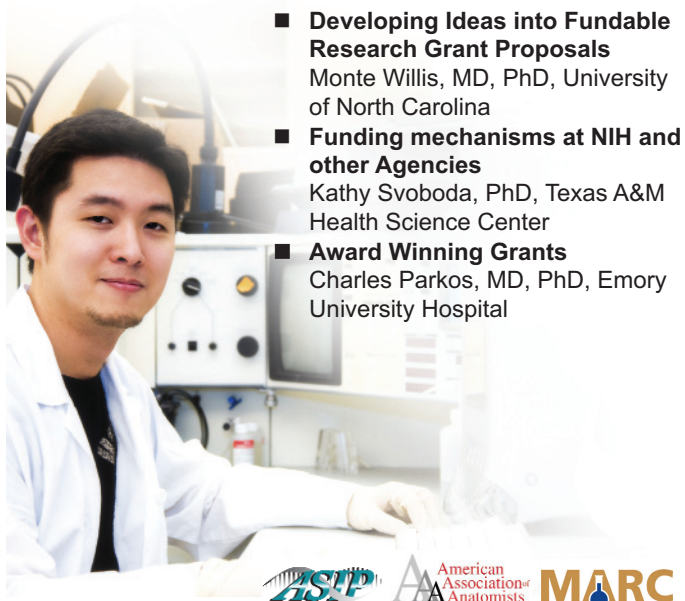


**12th Annual Career Development Program and Lunch**  
**Fundamental Basics for Success: How to Write Award-Winning Grant Proposals**

**Sunday, April 22, 2012 - 11:45am - 1:45pm**  
**San Diego Marriott Marquis & Marina, San Diego, CA**

*Chairs: Titus A. Reaves, PhD, Med. Univ. of South Carolina, and Jayne Reuben, PhD, Baylor College of Dentistry*  
 Sponsored by the ASIP Committee for Career Development, Women & Minorities, the American Association of Anatomists and the FASEB Minority Access to Research Careers (MARC) Office

- **Developing Ideas into Fundable Research Grant Proposals**  
*Monte Willis, MD, PhD, University of North Carolina*
- **Funding mechanisms at NIH and other Agencies**  
*Kathy Svoboda, PhD, Texas A&M Health Science Center*
- **Award Winning Grants**  
*Charles Parkos, MD, PhD, Emory University Hospital*



**REGISTRATION FORM**

**I am registering for the following event(s)**  
**(Limited space available. Register in advance to guarantee your space!)**

- Career Development Workshop and Breakfast, Getting Your Dream Job: Preparing Your CV/Resume and Managing Your Interview  
 Sunday, April 22, 2012 - 7:00-9:00am (FREE Breakfast Included!)
- 12th Annual Career Development Program and Lunch: Fundamental Basics for Success: How to Write Award-Winning Grant Proposals  
 Sunday, April 22, 2012 - 11:45 AM-1:45 PM (Lunch Included. FREE for Trainee and student members if registered by March 26, 2012. Please check the appropriate box below)
  - ASIP Trainee & Student Members - FREE
  - AAA Student Members - FREE
  - Faculty/Staff/Other \$20.00 - Deadline to pre-register: March 26, 2012

Name \_\_\_\_\_  
 Department \_\_\_\_\_  
 Institution \_\_\_\_\_  
 Address \_\_\_\_\_  
 City \_\_\_\_\_ State \_\_\_\_\_ Zip/Postal Code \_\_\_\_\_  
 Country \_\_\_\_\_ Phone \_\_\_\_\_  
 Fax \_\_\_\_\_ Email (required) \_\_\_\_\_

Payment must accompany this reservation (For Faculty/Staff/Others) - Make checks payable to ASIP or fax credit card info:

MasterCard     VISA     American Express

Card# \_\_\_\_\_ Exp. Date: \_\_\_\_\_  
 Amount: \_\_\_\_\_ Name on Card: \_\_\_\_\_  
 Signature: \_\_\_\_\_

Register online at  
[www.asip.org](http://www.asip.org)  
 OR  
 Mail/Fax/Email  
 Registration Form by  
 March 26, 2012 to:

American Society for  
 Investigative Pathology  
 9650 Rockville Pike  
 Bethesda, MD 20814 (USA)

Phone: 301-634-7130  
 Fax: 301-634-7990  
 Email: [meetings@asip.org](mailto:meetings@asip.org)

[www.asip.org](http://www.asip.org)

**After March 26, 2012**  
**Please register onsite -**  
**all tickets will be \$20**

